

Brochure



Original HP large format printing materials & supplies

For graphics & technical applications



HP large format printing materials

Consistently outstanding image quality – that’s what you see with HP large format printing materials. And with so many options in finish, size, and style, it’s easy to find the ideal paper for almost any printing application.

Original HP printing materials are designed to work with the complete system – together with HP printing supplies and the HP DesignJet printer – to provide uncompromising quality, consistency, performance, durability, and value every time.

Ongoing HP innovation includes printing materials with ColorPRO Technology that perform to a strict set of specifications to meet industry-leading performance standards. All products with ColorPRO Technology utilize advanced technologies which have been designed together with Original HP inks and HP printers to optimize printing system performance.



Explore the wide range of different types of printing materials, specifically designed to meet the demands of graphics and technical professionals.

Original HP inks and HP printing materials—good chemistry

Original HP inks and HP printing materials are designed together to provide image quality, durability, and consistency you can rely on. Reliable results enable increased productivity and reduced costs.



Original HP inks are more than just ink, and HP large format printing materials are far more than just paper. It’s the chemical makeup of each, together with the carefully engineered interaction between the two, that make exceptional results possible. Image quality and consistency so predictable, it’s almost cliché. Print permanence that’s measured in generations, not months or years. Breakthrough innovations that give you real alternatives to traditional materials that, by nature, must trade off quality, durability, even environmental considerations. The unique chemistry between HP inks and HP large format printing materials changes all that – among the broad array of materials offered in the HP large format printing materials portfolio, you can have it all.



Science & technology

HP Thermal Inkjet technology

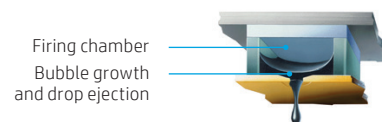
Inkjet is a digital printing technology that uses small drops of ink to form an image on a printed media. Drop-on-demand is one type of inkjet technology and it comes in two forms: Piezoelectric and Thermal. Piezoelectric inkjet technology uses mechanical means to eject ink. Thermal Inkjet technology uses heat to vaporize a thin layer of ink to form a bubble that expels a small drop of ink through an orifice or nozzle. These nozzles form part of a customer-replaceable printhead, which receives ink from ink cartridges via ink tubes.

In 1984, HP introduced the first inkjet printer, the 'Thinkjet.' This technology, initially introduced with small-format printers, was quickly adopted for the HP DesignJet large format line of printers.

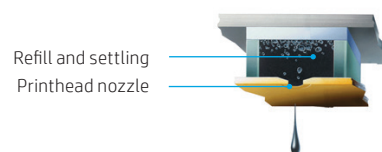
Firing a nozzle with HP Thermal Inkjet technology



A quick energy pulse is delivered to the resistor causing it to heat up. Then, bubble nucleation starts in the layer of ink next to the resistor.



The ink vapor bubble rapidly grows, forcing the ink meniscus to expand and it begins to form into a drop at the nozzle.



When the ink drop ejects, the ink vapor bubble collapses and ink flows into the firing chamber, refilling it.

HP Thermal Inkjet inks

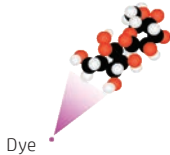
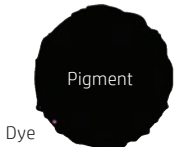
Traditional water-based inks (dye- or pigment-based) use water as the primary ink vehicle.

Dye-based inks

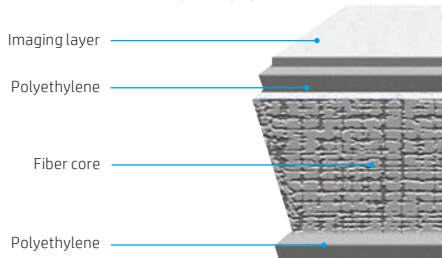
These inks contain colorant that provides extremely vivid colors, and are compatible with all inkjet coatings.

Pigment-based inks

Pigment-based inks contain finely ground pieces of a colored material. Due to their larger size, they are much more fade resistant than dye-based inks.

Traditional water-based inks		
	Dye-based inks	Pigment-based inks
		
Size	<10 nanometers	20-200 nanometers
Physical state	Dissolved in water	Dispersed in water
HP DesignJet printers	T series (colored inks)	T series (black ink only) Z series

Cross section of an HP photo paper



Inkjet receptive coatings

HP develops inkjet receptive coatings for print media such as paper, photo papers, films, and canvas. HP coatings are designed together with HP inks and printers in order to achieve optimum image quality and durability. The components of these coatings are determined by the properties of the media, the customer’s workflow, and the large format printer.

Currently, HP offers more than 30 different types of large format printing materials, most of which are coated materials. The coating can be of a porous nature (typically used in matte fiber-based papers) or it can be swellable (used in traditional inkjet photo papers and films). Each coating formulation may have up to 15 ingredients. HP may develop up to 100 different formulations before the final definitive one is chosen.

Photo papers

A traditional photo paper is made of several layers, including the paper base (fiber core), a top and bottom extruded polyethylene layer, and a light-sensitive coating. Photo papers used in inkjet printers have a similar structure, but the light-sensitive coating is replaced by a transparent coating capable of absorbing the water-based inks: the imaging layer. These coatings can be of a swellable or nano-porous nature.



Swellable coatings, optimized for Original HP dye-based inks

The swellable coating inflates (swells) as the ink is absorbed, then shrinks as water evaporates. This drying process may take some time and the dye is trapped inside the coating. Swellable coatings are only compatible with dye-based inks and they offer excellent fade resistance when designed together with dye-based inks.

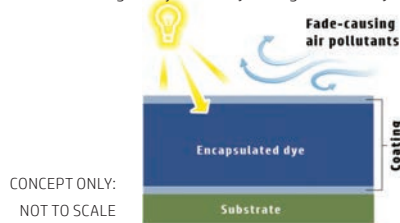
Advantages:

- Permanence (dyes are protected inside polymers)
- Image quality
- Gloss uniformity

Limitations:

- Dry time
- Water resistance
- Pigment compatibility

Swellable coatings subject the dye to light fade only



Porous coatings, optimized for Original HP pigment-based inks

Also known as porous or instant-dry, these coatings consist of microscopic particles that are bonded together. These particles form an open, porous structure. The ink is drawn into these open spaces by the capillary action of the coating which occurs during the printing process. These coatings are compatible with both dye- and pigment-based inks. However, when used with dye-based inks, it is important to protect the print (i.e., with lamination), if durability is desired.

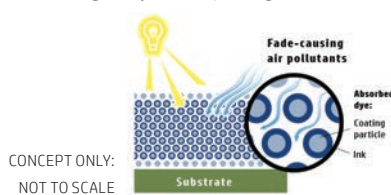
Advantages:

- Dry time
- Water resistance
- Gloss uniformity with dyes

Limitations:

- Permanence with dyes
- Scratch resistance with pigments
- Gloss uniformity with pigments

Porous coatings subject the dye to light and air fade



Value proposition

Value proposition of HP printing materials: image quality

Original HP large format printing materials make use of advanced HP-engineered coatings to take the guesswork out of producing high-quality, long-lasting prints. Designed together as a complete printing system, HP large format printers, Original HP inks, and HP printing materials deliver exceptional quality.

To achieve the best print quality results for every type of HP printing material, check for new 'paper presets' frequently at [HPLFMedia.com/paperpresets](https://hplfmedia.com/paperpresets).



Printing materials with ColorPRO Technology perform to a strict set of specifications to meet industry-leading performance standards. The specific technology behind media with ColorPRO Technology varies from product to product, however all products with ColorPRO Technology utilize advanced technologies which have been designed together with Original HP inks and HP printers to optimize printing system performance.



Value proposition of HP printing materials: permanence

Permanence refers to properties that define the ability of both the media and the printed image to resist light, air and humidity, fading, thermal degradation, and shelf-life issues.

HP designs and tests all of its inks and large format printing material combinations for optimal durability, knowing that different applications require different test requirements:

- Indoor, home and office display
- Indoor, commercial in-window display
- Outdoor display

HP performs all testing at HP facilities (San Diego, CA; Corvallis, OR; Barcelona, Spain; Singapore). In many cases, Wilhelm Imaging Research (WIR) verifies image permanence results. WIR has become a world-renowned, industry-leading third-party durability test facility for inkjet and other print technologies.

For example, Original HP Photo Inks (pigment-based inks), together with HP Professional Instant-dry Satin Photo Paper provide a display performance behind glass, indoors away from direct sunlight of up to 200 years (as per Wilhelm Imaging Research testing). In similar conditions, HP Premium Photo Papers (Gloss and Satin) printed with Original HP 711 inks last up to 70 years.

For more information, see HPLFMedia.com/hp/printpermanence.

Value proposition of HP printing materials: reliability

HP large format printing materials are designed and tested together with the HP printer and Original HP inks to provide a trouble-free printing experience. All Original HP printing materials are covered by an HP warranty. And in some cases, HP offers warranties tailored to specific sign and display application needs. For more information, see HPLFMedia.com/MediaWarranties.

Mechanical characteristics

The mechanical/physical properties of HP printing materials have a direct impact on printing reliability. HP designs and tests our printing materials to provide optimal media loading and paper advancement, which helps to avoid everyday printing issues, such as printhead crashes. Other important considerations during the design process are shown in the photo below:

- Cockle
- head crash
 - surface uniformity

- Dry time
- media handling

- Surface finish
- coefficient of friction
 - advance accuracy
 - appearance
 - dust



- Curl
- output quality

- Caliper
- printhead-paper spacing

- Stiffness
- flatness
 - media loading

Imaging characteristics

The imaging characteristics of the inkjet receptive layer developed by HP determine imaging properties as well as fade resistance and water resistance.

- Dot gain
- tone reproduction

- Gloss
- color saturation



- Permeability
- optical density

- Additives and treatment
- color bleed
 - feathering
 - dry time
 - fastness

- Brightness & color
- contrast and hue



Value proposition of HP printing materials: environmental

1. Responsible sourcing and management

FSC®-certified HP printing materials ([HPLFMedia.com/ecosolutions](https://hplfmedia.com/ecosolutions)) carry the Forest Stewardship Council (FSC) Mix label, signifying that these media support the development of responsible forest management worldwide.

- HP Universal Bond Paper
- HP Natural Tracing Paper
- HP Bright White Inkjet Paper
- HP Special Inkjet Paper
- HP Universal Coated Paper
- HP Universal Coated Paper, 3-in Core
- HP Universal Heavyweight Coated Paper
- HP Universal Heavyweight Coated Paper, 3-in Core
- HP Universal Instant-dry Gloss Photo Paper
- HP Universal Instant-dry Satin Photo Paper
- HP Everyday Instant-dry Gloss Photo Paper
- HP Everyday Instant-dry Satin Photo Paper
- HP Premium Instant-dry Gloss Photo Paper
- HP Premium Instant-dry Satin Photo Paper
- HP Premium Matte Photo Paper
- HP Super Heavyweight Plus Matte Paper, 3-in Core
- HP Universal Gloss Photo Paper

Note: Not all FSC® certified products are available in all regions.





2. Recyclability and reuse

Many HP large format printing materials are recyclable through commonly available recycling programs. In addition, many other printing materials are eligible for free, convenient return and recycling through the HP Large Format Media take-back program¹ (see [HPLFMedia.com/ecosolutions](https://hplfmedia.com/ecosolutions)) including the following printing materials:

- HP Clear Film
- HP Matte film
- HP Premium Vivid Color Backlit Film
- HP Durable Banner with DuPont™ Tyvek®, 2 Pack
- HP Everyday Matte Polypropylene, 2 Pack
- HP Premium Matte Polypropylene, 2 Pack

3. Carbon footprint improvement (Sign and Display Products)

Customers can reduce the carbon footprint of their banner printing materials—by over 80% using 170 g/m² (5-ounce) HP HDPE Reinforced Banner² and by over 75% using 200 g/m² (6-ounce) HP Double-sided HDPE Reinforced Banner³—compared to using a performance-equivalent 440 g/m² (13-ounce) PVC scrim banner material.

Value proposition of HP printing materials: consistency

Original HP large format printing materials, Original HP ink supplies, and HP DesignJet large format printers are designed together as a system to provide uncompromising image quality, consistency, performance, durability, and value every time.

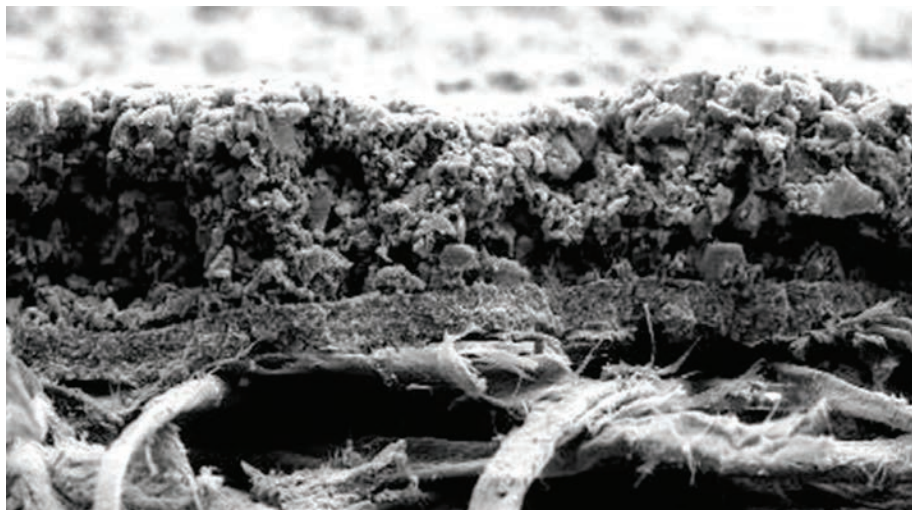
Consistency is one key property considered during the manufacturing of HP printing materials. HP implements strict product qualification processes and Plan of Control (PoC) during the paper manufacturing and coating processes. This enables consistent and accurate results time after time. HP Super Heavyweight Plus Matte Paper is one example of this consistency. Its thick inkjet receptive layer is capable of uniformly holding all the ink during the printing process. This ability to uniformly hold the ink over the full width and length of the roll, as well as the paper's constant grammage across different rolls and manufacturing runs, is key. It enables a consistently high color gamut on this matte coated paper, plot to plot, roll to roll.

¹ HP Large Format Media take-back program availability varies. Some recyclable HP papers can be recycled through commonly available recycling programs. Recycling programs may not exist in your area. See [HPLFMedia.com/hp/ecosolutions](https://hplfmedia.com/hp/ecosolutions) for details.

² Calculation by the HP IPG Environmental Technology Platform Team (and confirmed by an independent environmental life cycle assessment firm), based on the activities associated with the manufacturing of the product, and comparing 170 g/m² (5-ounce) HP HDPE Reinforced Banner to a traditional 440 g/m² (13-oz) PVC scrim product using the Swiss Center for Life Cycle Inventories Ecoinvent 2.0 database and model IPCC 2007 version 1.02; primarily for the category of PVC/PET/HDPE, and measuring materials extraction, transportation to the manufacturing site, and greenhouse gas emissions generated during manufacturing.

³ Calculation by the HP IPG Environmental Technology Platform Team (and confirmed by an independent environmental life cycle assessment firm), based on the activities associated with the manufacturing of the product, and comparing 200 g/m² (6-ounce) HP Double-sided HDPE Reinforced Banner to a traditional 440 g/m² (13-oz) PVC scrim product using the Swiss Center for Life Cycle Inventories Ecoinvent 2.2 database and model IPCC 2007 version 1.02; primarily for the category of PVC/PET/HDPE, and measuring materials extraction, transportation to the manufacturing site, and greenhouse gas emissions generated during manufacturing.

**Cross section of
HP Super Heavyweight Plus Matte Paper**





HP large format graphics & technical printing materials

Designed together with Original HP inks and the printer

HP offers a broad printing materials portfolio specifically designed to meet the needs of graphics, photography, and technical professionals. All products deliver vivid, high-quality prints and offer excellent price-to-performance ratios.

Key large format applications



CAD & GIS



GRAPHIC DESIGN & PHOTOGRAPHY



PRINT SERVICE PROVIDERS



RETAIL



EDUCATION

Print with the environment in mind

As you and your customers become increasingly concerned with the environmental impact of printing, look to HP for large format printing materials that reflect responsible sourcing practices and offer recycling options. FSC®- and PEFC™-certified papers support the development of responsible forest management worldwide. Many HP graphics and technical printing materials are recyclable through commonly available recycling programs and select materials, optimized for sign and display applications, can be recycled through the free, convenient HP Large Format Media take-back program.⁴

⁴ HP Large Format Media take-back program availability varies. Some recyclable HP papers can be recycled through commonly available recycling programs. Recycling programs may not exist in your area. See [HPLFMedia.com/hp/eco-solutions](https://www.hp.com/hp/eco-solutions) for details.



The mark of responsible forestry



HP bond & coated papers



Bond papers

HP Universal Bond Paper FSC® certified

HP Universal Bond Paper with ColorPRO Technology delivers professional quality and striking results at production speed. See more striking colors, crisper text and graphics, and higher-contrast blacks.

Weight: **80 g/m² (21 lbs)** Thickness/caliper: **106 microns/4.2 mil** Whiteness: **160⁶** Brightness: **110%⁷** Opacity: **91%⁸**

HP Bright White Inkjet Paper FSC® certified

HP Bright White Inkjet Paper with ColorPRO Technology is our brightest white bond paper. This cost-effective paper is ideal for everyday black and color line drawings. See the ColorPRO difference with high-impact graphics and an extended range of colors.

Weight: **90 g/m² (24 lbs)** Thickness/caliper: **119 microns/4.7 mil** Whiteness: **168⁶** Brightness: **113%⁷** Opacity: **93%⁸**

Coated papers

HP Coated Paper (Also available in 3-in core.)

Do more with this versatile premium bright white paper—from working comps and design proofs to fine line drawings and illustrations. This premium bright white paper is easy to handle and provides high-quality, consistent results.

Weight: **90 g/m² (24 lbs)** Thickness/caliper: **114 microns/4.5 mil** Whiteness: **145⁹** Brightness: **89%¹⁰** Opacity: **93%¹¹**

HP Universal Coated Paper FSC® certified (Also available in 3-in core.)

HP Universal Coated Paper is an economical material ideal for a variety of technical and graphics applications from working comps and design proofs to POP signage and special event posters.

Weight: **90 g/m² (24 lbs)** Thickness/caliper: **124 microns/4.9 mil** Whiteness: **117¹²** Brightness: **89%¹⁰** Opacity: **89%¹¹**

HP Universal Heavyweight Coated Paper FSC® certified (Also available in 3-in core.)

This economical printing material is ideal for a variety of medium ink-density graphics and technical applications including presentations, indoor signs, and posters that are frequently replaced.

Weight: **131 g/m² (33 lbs)** Thickness/caliper: **172 microns/6.8 mil** Whiteness: **130¹²** Brightness: **>97%¹⁰** Opacity: **>92%¹¹**

HP Heavyweight Coated Paper (Also available in 3-in core.)

HP Heavyweight Coated Paper is ideal for durable, long-term applications such as signs and posters. The bright, matte inkjet paper makes colorful, light ink-density images look crisp and smooth.

Weight: **130 g/m² (35 lbs)** Thickness/caliper: **167 microns/6.6 mil** Whiteness: **144¹²** Brightness: **89%¹⁰** Opacity: **96%¹¹**

HP Super Heavyweight Plus Matte Paper (Also available in 3-in core.)

HP Super Heavyweight Plus Matte Paper is a best-in-class graphics display media that delivers sharp image quality and ripple-free prints, even with high ink density. Enhance productivity with broad application versatility, instant dry time, and excellent film laminate compatibility. See a rich, distinctive look and feel with the ultra-white matte finish.

Weight: **200 g/m² (55 lbs)** Thickness/caliper: **264 microns/10.4 mil** Whiteness: **130¹²** Brightness: **91%¹⁰** Opacity: **98%¹¹**

HP technical papers



HP Special Inkjet Paper FSC® certified

HP Special Inkjet Paper is an economical everyday paper, ideal for high/resolution presentation graphics.

Weight: **131 g/m²** Thickness/caliper: **172 microns/6.8 mil** Whiteness: **240¹²** Brightness: **96%¹⁰** Opacity: **92%¹¹**

HP Natural Tracing Paper FSC® certified

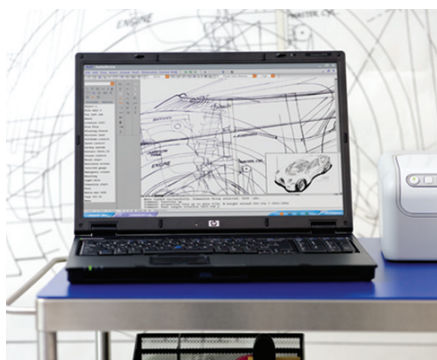
HP Natural Tracing Paper is designed for reproducible final drawings that are highly durable.

Weight: **90 g/m²** Thickness/caliper: **76 microns/3 mil** Whiteness: **N/A** Brightness: **61%¹⁰** Opacity: **25%¹¹**



- ⁵ Can be recycled through commonly available recycling programs.
- ⁶ Per ISO 11475 Test Method.
- ⁷ Per ISO 2470-2 Test Method.
- ⁸ Per ISO 2471 Test Method.
- ⁹ Per CIE Whiteness ISO 11475 D65/10° Outdoor Daylight Test Method.
- ¹⁰ Per TAPPI T-452 Test Method.
- ¹¹ Per TAPPI T-425 Test Method.
- ¹² Per CIE Ganz 82 Test Method.
- ¹³ HP Large Format Media take-back program availability varies. Recycling programs may not exist in your area. See [HPLFMedia.com/ecosolutions](https://hplfmedia.com/ecosolutions) for details.
- ¹⁴ Per TAPPI T-425 Test Method.
- ¹⁵ Per ISO 2469 Test Method.
- ¹⁶ Per ISO 2470 Test Method.
- ¹⁷ Per CIE Ganz 82 Test Method.
- ¹⁸ Per TAPPI T-452 Test Method.
- ¹⁹ Display permanence rating for interior displays/away from direct sunlight, under glass by HP Image Permanence Lab. For more information, see [HPLFMedia.com/printpermanence](https://hplfmedia.com/printpermanence).





HP films (graphics & technical)

HP Translucent Bond Paper ⁵

This economical alternative to vellum is ideal for reproducible drawings and check prints.

Weight: **63 g/m²** Thickness/caliper: **72 microns/3 mil** Whiteness: **113¹²** Brightness: **19¹⁵**



HP Clear Film ¹³

HP Clear Film is ideal for multiple overlays and transparent images. This optically clear film provides excellent ink adhesion and bleed control as well as bright, vivid colors.

Weight: **174 g/m²** Thickness/caliper: **132 microns/5.2 mil** Whiteness: **N/A** Brightness: **N/A** Opacity: **8%¹⁴**

HP Matte Film ¹³

Keep track of changes during the review process. Redraw in pen, pencil, or marker on the erasable side, write with pen on the traditional drafting coating on the opposite side. This smear-resistant, archivable, and recyclable¹³ film produces sharp black and color lines and uniform solid areas and is ideal for original and high-volume reproducible drawings.

Weight: **160 g/m²** Thickness/caliper: **127 microns/5 mil** Whiteness: **N/A** Brightness: **72%¹⁵** Opacity: **34%¹⁸**



HP photographic papers



Optimized for Original HP dye-based inks

HP Universal Gloss Photo Paper FSC® certified

HP Universal Gloss Photo Paper is an economical and versatile choice for presentation graphics, displays, and color presentations.

Weight: **200 g/m²** Thickness/caliper: **185 microns/7.4 mil** Whiteness: **120¹⁷** Brightness: **95%¹⁸** Opacity: **95%¹⁴**

HP Universal Satin Photo Paper FSC® certified

HP Universal Satin Photo Paper is a versatile, economical satin-finish paper that provides excellent image quality and vivid color for presentation graphics, displays, and presentations.

Weight: **200 g/m²** Thickness/caliper: **185 microns/7.4 mil** Whiteness: **120¹⁷** Brightness: **95%¹⁸** Opacity: **95%¹⁴**

Optimized for Original HP pigment-based inks

HP Everyday Instant-dry Gloss Photo Paper ²⁰ FSC® certified

Designed for maximum ink absorption, this everyday gloss-finish photo paper includes a porous surface that enables higher ink density, speeds dry time, and achieves vibrant, long-lasting color. And this FSC®-certified paper is recyclable through commonly available recycling programs.²⁰

Weight: **235 g/m²** Thickness/caliper: **231 microns/9.1 mil** Whiteness: **90²¹** Brightness: **90%^{18,16}** Opacity: **96%^{14,22}**

HP Everyday Instant-dry Satin Photo Paper ²⁰ FSC® certified

Designed for maximum ink absorption, this everyday satin-finish photo paper includes a porous surface that enables higher ink density, speeds dry time, and achieves vibrant, long-lasting color. And this FSC®-certified paper is recyclable through commonly available recycling programs.²⁰

Weight: **235 g/m²** Thickness/caliper: **231 microns/9.1 mil** Whiteness: **90²¹** Brightness: **90%^{18,16}** Opacity: **96%^{14,22}**

²⁰ In North America and Asia (including Japan), recyclable in consumer collection systems that can accept mixed paper (may not be recyclable in your area); in Europe recyclable in consumer collection systems that accept liquid packaging.

²¹ Per ISO 11476 Test Method.

²² Per ISO 2471 Test Method.

HP photographic papers (continued)



HP Universal Instant-dry Gloss Photo Paper FSC® certified

This economical gloss-finish photo paper has been improved, now offering even higher image quality with deeper blacks and more vivid colors. Prints dry instantly for immediate handling and lamination. And indoor displays on this FSC®-certified paper provide exceptional display permanence.²⁴

Weight: **200 g/m²** Thickness/caliper: **195 microns/7.7 mil** Whiteness: **99²⁵** Brightness: **> 92%²⁶** Opacity: **> 94.5%²⁷**



HP Universal Instant-dry Satin Photo Paper FSC® certified

This economical satin-finish photo paper has been improved, now offering even higher image quality with deeper blacks and more vivid colors. Prints dry instantly for immediate handling and lamination. And indoor displays on this FSC®-certified paper provide exceptional display permanence.²⁴

Weight: **200 g/m²** Thickness/caliper: **200 microns/7.9 mil** Whiteness: **99²⁵** Brightness: **> 92%²⁶** Opacity: **> 94.5%²⁷**



HP Premium Instant-dry Gloss Photo Paper FSC® certified

This premium gloss-finish photo paper has been improved to offer unrivaled image quality for brilliant photos and high-impact display graphics—from posters and presentations to retail graphics. Prints dry instantly for immediate handling and lamination. And indoor displays on this FSC®-certified paper provide exceptional display permanence.²⁵

Weight: **260 g/m²** Thickness/caliper: **261 microns/10.3 mil** Whiteness: **105²⁸** Brightness: **92%²⁶** Opacity: **97%²⁹**



HP Premium Instant-dry Satin Photo Paper FSC® certified

This premium satin-finish photo paper has been improved to offer unrivaled image quality for brilliant photos and high-impact display graphics—from posters and presentations to retail graphics. Prints dry instantly for immediate handling and lamination. And indoor displays on this FSC®-certified paper provide exceptional display permanence.²⁴

Weight: **260 g/m²** Thickness/caliper: **261 microns/10.3 mil** Whiteness: **104²⁸** Brightness: **92%²⁶** Opacity: **97%²⁹**

HP Professional Instant-dry Satin Photo Paper

This professional, satin-finish photo paper is ideal for printing photographs with vivid, true-to-life colors, realistic skin tones, rich blacks, and sharp details. The professional-grade weight adds a gallery-ready look and feel and enables easier handling of large-size exhibition prints. Long-lasting display prints provide exceptional display permanence.²⁴

Weight: **300 g/m²** Thickness/caliper: **287 microns/11.3 mil** Whiteness: **> 115²⁸** Brightness: **> 91%^{26,30}** Opacity: **> 97%²⁹, >95%²⁷**

HP Premium Matte Photo Paper FSC® certified

This premium photo paper features a smooth matte surface together with a sturdy 210-g/m² weight ideal for producing professional, ripple-free prints. Instant-dry prints enable immediate lamination.

Weight: **200 g/m²** Thickness/caliper: **264 microns /10.4 mil** Whiteness: **130²⁸** Brightness: **91%²⁶** Opacity: **98%²⁹**

²³ In North America and Asia (including Japan), recyclable in consumer collection systems that can accept mixed paper (may not be recyclable in your area); in Europe recyclable in consumer collection systems that accept liquid packaging.

²⁴ Indoor display permanence ratings by HP Image Permanence Lab and/or by Wilhelm Imaging Research, Inc. on a range of HP media. For more information, see HPLFMedia.com/printpermanence.

²⁵ Per ISO 11476 Test Method.

²⁶ Per TAPPI T-452 Test Method.

²⁷ Per ISO 2471 Test Method.

²⁸ Per CIE Ganz 82 Test Method.

²⁹ Per TAPPI T-425 Test Method.

³⁰ Per ISO 2470 Test Method.



HP backlit materials



HP Premium Vivid Color Backlit Film ³¹

With a porous coating on the printable front side, HP Premium Vivid Color Backlit Film enhances image definition and provides excellent color contrast. A thick, stiff construction enables easy handling. Designed together with Original HP pigment inks, this film produces fast-dry prints with excellent indoor, in-window display permanence.³²

Weight: **285 g/m²** Thickness/caliper: **220 microns/8.7 mil** Whiteness: **115³³, 110³⁴** Brightness: **>or = to 86%³⁵** Opacity: **>or = to 77%³⁶**
>or = to 74%³⁷

³¹ HP Large Format Media take-back program availability varies. Recycling programs may not exist in your area. See [HPLFMedia.com/hp/ecosolutions](https://hplfmedia.com/hp/ecosolutions) for details.

³² Interior in-window display ratings by HP Image Permanence Lab on a range of HP media. HP predictions based on test data under Xenon-Arc illuminant—calculation assumes 6,000 Lux/12 hr day. For more information, see [HPLFMedia.com/hp/t/printpermanence](https://hplfmedia.com/hp/t/printpermanence).

³³ Per CIE Ganz 82 Test Method.

³⁴ Per ISO 11476 Test Method.

³⁵ Per TAPPI T-452 Test Method.

³⁶ Per TAPPI T-425 Test Method.

³⁷ Per ISO 2471 Test Method.



HP self-adhesive materials



HP Universal Adhesive Vinyl, 2 Pack

An economical, everyday adhesive vinyl ideal for indoor applications. HP Universal Adhesive Vinyl is easy to use and produces long-lasting, eye-catching displays.

Weight:	Thickness/caliper:	Whiteness:	Brightness:	Opacity:
Without liner: 150 g/m²	Without liner: 139 microns (5.5 mil)	With liner:	With liner:	With liner:
With liner: 290 g/m²	With liner: 289 microns (11.4 mil)	115³⁸, 141³⁹	>95%⁴⁰, >96%⁴¹	>96%^{42, 43}

HP Colorfast Adhesive Vinyl, 2 Pack

Produce indoor signage with image quality so sharp, it stands up to close inspection. With a broad color gamut, you get big, vibrant color. And with a permanent, pressure-sensitive adhesive, this vinyl is easy to use and resists peeling.

Weight:	Thickness/caliper:	Whiteness:	Brightness:	Opacity:
Without liner: 190 g/m²	Without liner: 160 microns (6.3 mil)	With liner:	With liner:	With liner:
With liner: 345 g/m²	With liner: 325 microns (12.8 mil)	112³⁸, 130³⁹	>90%⁴⁰, >92%⁴¹	>95%⁴², >96%⁴³

HP Everyday Adhesive Matte Polypropylene, 2 Pack

A versatile and durable polypropylene film that produces quality prints with excellent color vibrancy at an everyday price. Ideal for both indoor and outdoor applications.

Weight:	Thickness/caliper:	Whiteness:	Brightness:	Opacity:
Without liner: 120 g/m²	Without liner: 180 microns (7.1 mil)	With liner:	With liner:	With liner:
With liner: 168 g/m²	With liner: 215 microns (8.5 mil)	150³⁹	>101%⁴¹	>96%^{42, 43}

HP Everyday Adhesive Gloss Polypropylene, 2 Pack

This self-adhesive polypropylene film produces glossy prints with excellent color vibrancy and brilliant, photo-realistic images. Tear-resistant and easy to handle, its strong adhesive ensures secure, reliable mounting.

Weight:	Thickness/caliper:	Whiteness:	Brightness:	Opacity:
Without liner: 120 g/m²	Without liner: 180 microns (7.1 mil)	With liner:	With liner:	With liner:
With liner: 168 g/m²	With liner: 215 microns (8.5 mil)	99%^{38, 39}	87.5%⁴⁰, 90%⁴¹	>95%⁴², >96%⁴³



³⁸ Per ISO 11476 Test Method.

³⁹ Per ISO 11475 Test Method.

⁴⁰ Per TAPPI T-452 Test Method.

⁴¹ Per ISO 2470 Test Method.

⁴² Per TAPPI T-425 Test Method.

⁴³ Per ISO 2471 Test Method.

HP banner & sign materials



HP Opaque Scrim

HP Opaque Scrim is a matte, opaque PVC banner with a tear-resistant polyester fabric embedded between two white vinyl layers. It is an easy-to-use, high-quality material for banners, decorating, and indoor and outdoor signs.

Weight: **495 g/m²** Thickness/caliper: **378 microns/14.9 mil** Whiteness: **127⁴⁴** Brightness: **98%⁴⁵** Opacity: **100%⁴⁶**

HP Premium Matte Polypropylene, 2 Pack ⁴⁷

This versatile, durable matte polypropylene film is water-⁴⁸ and tear-resistant, making it ideal for both indoor and outdoor applications full of brilliant color and edge definition. And it's recyclable.⁴⁷

Weight: **140 g/m²** Thickness/caliper: **231 microns (9.1 mil)** Whiteness: **120⁴⁹, 154⁵⁰** Brightness: **>99%, 105%⁵¹** Opacity: **>96%⁴⁶, 98%⁵²**

HP Everyday Matte Polypropylene, 2 Pack ⁴⁷

Produce high-impact signs with this versatile, durable matte polypropylene film. This tear-resistant substrate is easy to use and handle, and is ideal for both indoor and outdoor applications.

Weight: **120 g/m²** Thickness/caliper: **203 microns/8 mil** Whiteness: **>113⁴⁹** Brightness: **>101%⁵¹** Opacity: **>96%⁴⁶**

HP Durable Semi-gloss Display Film

HP Durable Semi-gloss Display Film is an opaque, white inkjet-compatible coated PET film designed for pop-up display and roll-up indoor presentation systems. No backside lamination is needed, and this film is resistant to stress from rolling and unrolling.

Weight: **265 g/m²** Thickness/caliper: **198 microns/7.8 mil** Whiteness: **N/A** Brightness: **119%⁵³** Opacity: **>99%⁵⁴**

HP Durable Banner with DuPont™ Tyvek®, 2 Pack ⁴⁷

HP Durable Banner with DuPont™ Tyvek® is durable, water resistant, and easy-to-handle. Grommetable, stitchable, tear-resistant, and strong, it's the ideal solution for long-term quality and durability.

Weight: **133 g/m²** Thickness/caliper: **299 microns/11.8 mil** Whiteness: **125⁴⁹, 154⁵⁰** Brightness: **>99%⁴⁵, 102%⁵¹** Opacity: **>96%^{46,52}**

⁴⁴ Per CIE Ganz 82 Test Method.

⁴⁵ Per TAPPI T-452 Test Method.

⁴⁶ Per TAPPI T-425 Test Method.

⁴⁷ HP Large Format Media take-back program availability varies. Recycling programs may not exist in your area. See [HPLFMedia.com/ecosolutions](https://hplfmedia.com/ecosolutions) for details.

⁴⁸ With HP 83 UV pigment inks. Water resistance testing by HP Image Permanence Lab on a range of HP media and follows ISO 18935 method. For more information, see [HPLFMedia.com/printpermanence](https://hplfmedia.com/printpermanence).

⁴⁹ Per ISO 11476 Test Method.

⁵⁰ Per ISO 11475 Test Method.

⁵¹ Per ISO 2470 Test Method.

⁵² Per ISO 2471 Test Method.

⁵³ Per ISO 2470-1 Test Method.

⁵⁴ Per DIN 53146 Test Method.



HP fine art printing materials



HP Matte Litho-realistic Paper, 3-in Core FSC® certified

HP Matte Litho-realistic Paper delivers outstanding results with the look, feel, and longevity of a heavy, matte offset paper. This natural-white paper is ideal for high-quality poster art and other cost-effective art reproductions.

Weight: **269 g/m²** Thickness/caliper: **307 microns/12 mil** Whiteness: **95⁵⁵** Brightness: **95%⁵⁶** Opacity: **98%⁵⁷**

HP Artist Matte Canvas

HP Artist Matte Canvas has a natural, artistic look and feel for photo enlargements and reproductions. This affordable canvas produces true artistic quality with precise colors on a bright-white, slightly textured matte finish.

Weight: **380 g/m²** Thickness/caliper: **380 microns/15 mil** Whiteness: **120, 125, 123⁵⁸** Brightness: **92%⁶⁰** Opacity: **>99%⁶¹**

HP Professional Matte Canvas

HP Professional Matte Canvas now offers a more consistent base fabric. Museum-quality, matte-finish prints achieve vivid, accurate color reproduction with a bright white surface and improved color gamut ideal for fine art and photographs.⁶² Long-lasting, water-resistant⁶³ prints preserve your work. A flexible finish resists cracking for easier mounting. And broad laminate compatibility includes water-based liquid laminates.

Weight: **430 g/m²** Thickness/caliper: **460 microns/18 mil** Whiteness: **110, 131, 130⁵⁸** Brightness: **96, 106⁶⁰** Opacity: **>99%⁶¹**

⁵⁵ Per ISO 11475 Test Method.

⁵⁶ Per ISO 2470 Test Method.

⁵⁷ Per DIN 53146 Test Method.

⁵⁸ Per CIE Ganz 82 Test Method.

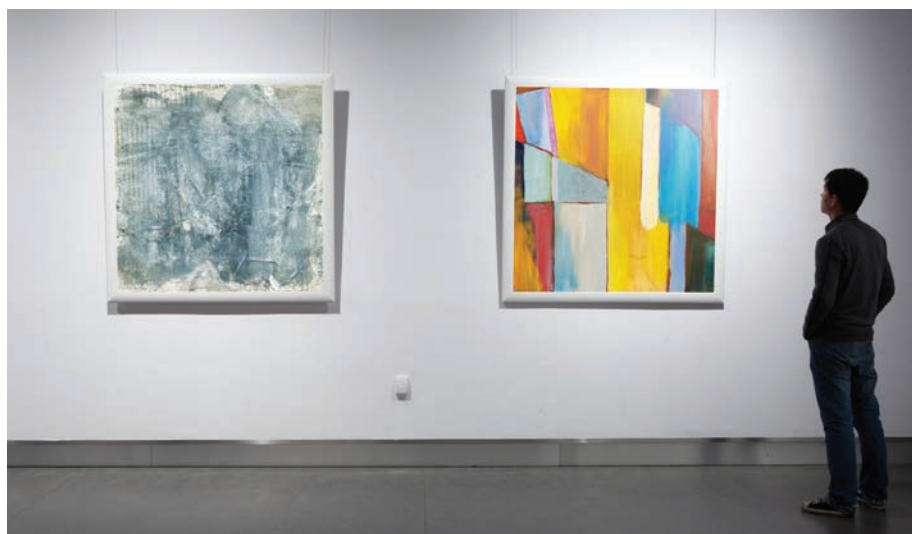
⁵⁹ Per ISO 11476 Test Method.

⁶⁰ Per TAPPI T-452 Test Method.

⁶¹ Per TAPPI T-425 Test Method.

⁶² Compared to the previous version.

⁶³ With Original HP 70 and HP 91 Photo Inks and HP 771 Vivid Photo Inks. Water resistance testing by HP Image Permanence Lab on a range of HP media and follows ISO 18935 method. For more information, see [HPLFMedia.com.com/printpermanance](https://hplfmedia.com.com/printpermanance).



for HP large format printers

Original HP inks and HP printing materials—system chemistry

Original HP inks are more than just ink, and HP large format printing materials are far more than just paper. It's the chemical makeup of each, together with the carefully engineered interaction between the two, that make exceptional results possible. Image quality and consistency so predictable, it's almost cliché. Print permanence that's measured in generations, not months or years. Breakthrough innovations that give you real alternatives to traditional materials that, by nature, must trade-off quality, durability, even environmental considerations. The unique chemistry between HP inks and HP large format printing materials changes all that – among the broad array of materials offered in the HP large format printing materials portfolio, you can have it all.

Original HP printing supplies feature intelligent technology, built into the ink cartridges, printheads, and the printer. These critical system components communicate interactively to provide automatic and continuous adjustments that optimize print quality and maximize printhead life. Individually-replaceable printheads enable easy, low-maintenance, cost-effective printing.

Many HP graphics and technical printing materials are recyclable through commonly available recycling programs. And in some cases, HP offers the free, convenient HP Large Format Media take-back program.¹ And the HP Planet Partners program provides easy, convenient return and recycling of most Original HP DesignJet ink cartridges and printheads.²

Printer availability varies by region. Americas includes the United States, Canada, and Latin America

HP Graphics and Technical Printing Materials				Region availability	HP DesignJet Printer/Photo Printer/Multifunction Printer Compatibility and Ink Technology																																																																																																																																																																																																																																																																																																																																																																																																																																																																																																																																																																																																																																																																																																																																																																																																																																																																																																																																																																																																																																																																																																																			
					HP pigment inks														HP dye color inks																																																																																																																																																																																																																																																																																																																																																																																																																																																																																																																																																																																																																																																																																																																																																																																																																																																																																																																																																																																																																																																																																																					
Part number	Metric size (mm x m)	Imperial size (in x ft)	3-in Core	2 Pack	Americas	Japan	Asia (not Japan)	Europe	DesignJet Z2100	DesignJet Z3100	DesignJet Z3200	DesignJet Z5400	DesignJet Z6100	DesignJet Z6200	DesignJet Z6600	DesignJet Z6800	DesignJet 5000 Dye	DesignJet 5500 Dye	DesignJet D5800	DesignJet T120	DesignJet T520	DesignJet T730	DesignJet T830 MFP	DesignJet T610	DesignJet T770	DesignJet T790	DesignJet T795	DesignJet T1100	DesignJet T1120	DesignJet T1200	DesignJet T1300	DesignJet T2300 MFP	DesignJet T920	DesignJet T930	DesignJet T1500	DesignJet T1530	DesignJet T2500 MFP	DesignJet T2530 MFP	DesignJet T3500 MFP	DesignJet T620	DesignJet T7100	DesignJet T7200	DesignJet T11	DesignJet 130																																																																																																																																																																																																																																																																																																																																																																																																																																																																																																																																																																																																																																																																																																																																																																																																																																																																																																																																																																																																																																																																												
HP Universal Bond Paper (FSC® certified) ³ 🌱 ⁴	SA025A	610 x 45,7			●	●		●	●	●	●	●	●	●	●	●	●	●	●	●	●	●	●	●	●	●	●	●	●	●	●	●	●	●	●	●	●	●	●	●	●	●	●	●	●	●	●	●	●	●	●	●	●	●	●	●	●	●	●	●	●	●	●	●	●	●	●	●	●	●	●	●	●	●	●	●	●	●	●	●	●	●	●	●	●	●	●	●	●	●	●	●	●	●	●	●	●	●	●	●	●	●	●	●	●	●	●	●	●	●	●	●	●	●	●	●	●	●	●	●	●	●	●	●	●	●	●	●	●	●	●	●	●	●	●	●	●	●	●	●	●	●	●	●	●	●	●	●	●	●	●	●	●	●	●	●	●	●	●	●	●	●	●	●	●	●	●	●	●	●	●	●	●	●	●	●	●	●	●	●	●	●	●	●	●	●	●	●	●	●	●	●	●	●	●	●	●	●	●	●	●	●	●	●	●	●	●	●	●	●	●	●	●	●	●	●	●	●	●	●	●	●	●	●	●	●	●	●	●	●	●	●	●	●	●	●	●	●	●	●	●	●	●	●	●	●	●	●	●	●	●	●	●	●	●	●	●	●	●	●	●	●	●	●	●	●	●	●	●	●	●	●	●	●	●	●	●	●	●	●	●	●	●	●	●	●	●	●	●	●	●	●	●	●	●	●	●	●	●	●	●	●	●	●	●	●	●	●	●	●	●	●	●	●	●	●	●	●	●	●	●	●	●	●	●	●	●	●	●	●	●	●	●	●	●	●	●	●	●	●	●	●	●	●	●	●	●	●	●	●	●	●	●	●	●	●	●	●	●	●	●	●	●	●	●	●	●	●	●	●	●	●	●	●	●	●	●	●	●	●	●	●	●	●	●	●	●	●	●	●	●	●	●	●	●	●	●	●	●	●	●	●	●	●	●	●	●	●	●	●	●	●	●	●	●	●	●	●	●	●	●	●	●	●	●	●	●	●	●	●	●	●	●	●	●	●	●	●	●	●	●	●	●	●	●	●	●	●	●	●	●	●	●	●	●	●	●	●	●	●	●	●	●	●	●	●	●	●	●	●	●	●	●	●	●	●	●	●	●	●	●	●	●	●	●	●	●	●	●	●	●	●	●	●	●	●	●	●	●	●	●	●	●	●	●	●	●	●	●	●	●	●	●	●	●	●	●	●	●	●	●	●	●	●	●	●	●	●	●	●	●	●	●	●	●	●	●	●	●	●	●	●	●	●	●	●	●	●	●	●	●	●	●	●	●	●	●	●	●	●	●	●	●	●	●	●	●	●	●	●	●	●	●	●	●	●	●	●	●	●	●	●	●	●	●	●	●	●	●	●	●	●	●	●	●	●	●	●	●	●	●	●	●	●	●	●	●	●	●	●	●	●	●	●	●	●	●	●	●	●	●	●	●	●	●	●	●	●	●	●	●	●	●	●	●	●	●	●	●	●	●	●	●	●	●	●	●	●	●	●	●	●	●	●	●	●	●	●	●	●	●	●	●	●	●	●	●	●	●	●	●	●	●	●	●	●	●	●	●	●	●	●	●	●	●	●	●	●	●	●	●	●	●	●	●	●	●	●	●	●	●	●	●	●	●	●	●	●	●	●	●	●	●	●	●	●	●	●	●	●	●	●	●	●	●	●	●	●	●	●	●	●	●	●	●	●	●	●	●	●	●	●	●	●	●	●	●	●	●	●	●	●	●	●	●	●	●	●	●	●	●	●	●	●	●	●	●	●	●	●	●	●	●	●	●	●	●	●	●	●	●	●	●	●	●	●	●	●	●	●	●	●	●	●	●	●	●	●	●	●	●	●	●	●	●	●	●	●	●	●	●	●	●	●	●	●	●	●	●	●	●	●	●	●	●	●	●	●	●	●	●	●	●	●	●	●	●	●	●	●	●	●	●	●	●	●	●	●	●	●	●	●	●	●	●	●	●	●	●	●	●	●	●	●	●	●	●	●	●	●	●	●	●	●	●	●	●	●	●	●	●	●	●	●	●	●	●	●	●	●	●	●	●	●	●	●	●	●	●	●	●	●	●	●	●	●	●	●	●	●	●	●	●	●	●	●	●	●	●	●	●	●	●	●	●	●	●	●	●	●	●	●	●	●	●	●	●	●	●	●	●	●	●	●	●	●	●	●	●	●	●	●	●	●	●	●	●	●	●	●	●	●	●	●	●	●	●	●	●	●	●	●	●	●	●	●	●	●	●	●	●	●	●	●	●	●	●	●	●	●	●	●	●	●	●	●	●	●	●	●	●	●	●	●	●	●	●	●	●	●	●	●	●	●	●	●	●	●	●	●	●	●	●	●	●	●	●	●	●	●	●	●	●	●	●	●	●	●	●	●	●	●	●	●	●	●	●	●	●	●	●	●	●	●	●	●	●	●	●	●	●	●	●	●	●	●	●	●	●	●	●	●	●	●	●	●	●	●	●	●</

Compatibility & Availability Chart

Printer availability varies by region. Americas includes the United States, Canada, and Latin America.

HP Graphics and Technical Printing Materials

HP Graphics and Technical Printing Materials				Region availability	HP DesignJet Printer/Photo Printer/Multifunction Printer Compatibility and Ink Technology																																												
					HP pigment inks										HP dye color inks																																		
	Part number	Metric size (mm x m)	Imperial size (in x ft)	3-in Core	2 Pack	Americas	Japan	Asia (not Japan)	Europe	DesignJet Z2100	DesignJet Z3100	DesignJet Z3200	DesignJet Z5400	DesignJet Z6100	DesignJet Z6200	DesignJet Z6600	DesignJet Z6800	DesignJet 5000 Dye	DesignJet 5500 Dye	DesignJet D5800	DesignJet T120	DesignJet T520	DesignJet T730	DesignJet T830 MFP	DesignJet T610	DesignJet T770	DesignJet T790	DesignJet T795	DesignJet T1100	DesignJet T1120	DesignJet T1200	DesignJet T1300	DesignJet T2300 MFP	DesignJet T920	DesignJet T930	DesignJet T1500	DesignJet T1530	DesignJet T2500 MFP	DesignJet T2530 MFP	DesignJet T3500 MFP	DesignJet T620	DesignJet T7100	DesignJet T7200	DesignJet T11	DesignJet T130 ^o				
HP Bond and Coated Papers (continued)																																																	
HP Coated Paper 🌱 ⁴	C6019B	610 x 45,7	24 x 150			●	●	●	●	●	●	●	●	●	●	●	●	●	●	●	●	●	●							●								●			●	●	●	●	●	●			
	C6020B	914 x 45,7	36 x 150			●	●	●	●	44			●	●	●	●	●	●	●	●	●	●	36						44			●								●			●	●	●	●	●		
	C6567B	1067 x 45,7	42 x 150			●	●	●	●	44	44		●	●	●	●	●	●	●	●	●	●							44													●	●	●	●	●	●		
	C6568B	1372 x 45,7	54 x 150			●	●	●	●					40		60		60		60																									●	●	●	●	●
	C6980A	914 x 91,4	36 x 300			●	●	●	●	44	44		●	●	●	●	●	●	●	●	●	●								44												●	●	●	●	●	●		
	Q1443A	(A2) 420 x 45,7					●				●		●	●	●	●	●	●	●	●	●	●	●	●						●											●	●	●	●	●	●			
	Q1442A	(A1) 594 x 45,7					●	●	●	●	●		●	●	●	●	●	●	●	●	●	●	●	●						●											●	●	●	●	●	●			
	Q1441A	(A0) 841 x 45,7					●		●	44	44		●	●	●	●	●	●	●	●	●	●	●	36						44												●	●	●	●	●	●		
HP Universal Heavyweight Coated Paper (FSC® certified) ³ 🌱 ⁴	SA029B	610 x 30,5			●	●			●	●		●	●	●	●	●	●	●	●	●	●	●	●							●											●	●	●	●	●	●			
	Q1412B	610 x 30,5	24 x 100			●	●	●	●	●	●		●	●	●	●	●	●	●	●	●	●	●							●												●	●	●	●	●	●		
	Q1413B	914 x 30,5	36 x 100			●	●	●	●	44	44		●	●	●	●	●	●	●	●	●	●	●	36						44												●	●	●	●	●	●		
	Q1414B	1067 x 30,5	42 x 100			●	●	●	●	44	44		●	●	●	●	●	●	●	●	●	●	●							44												●	●	●	●	●	●		
	Q1416B	1524 x 30,5	60 x 100			●	●	●	●						60		60		60																														
	D9R44B	914 x 61	36 x 200	●		●	●	●	●	44 ⁷	44 ⁷		● ⁷	● ⁷	● ⁷	● ⁷	● ⁷	● ⁷	● ⁷	● ⁷	● ⁷	● ⁷																				● ⁷	● ⁷	● ⁷	● ⁷	● ⁷			
	D9R46B	1372 x 61	54 x 200	●		●	●	●	●							60 ⁷		60 ⁷																															
	D9R47B	1524 x 61	60 x 200	●		●	●	●	●								60 ⁷		60 ⁷																														
HP Heavyweight Coated Paper 🌱 ⁴	C6029C	610 x 30,5	24 x 100			●	●	●	●	●	●		●	●	●	●	●	●	●	●	●	●	●							●												●	●	●	●	●	●		
	C6030C	914 x 30,5	36 x 100			●	●	●	●	44	44		●	●	●	●	●	●	●	●	●	●	●	36						44												●	●	●	●	●	●		
	C6569C	1067 x 30,5	42 x 100			●	●	●	●	44	44		●	●	●	●	●	●	●	●	●	●	●							44												●	●	●	●	●	●		
	C6570C	1372 x 30,5	54 x 100			●	●	●	●						60		60		60																														
	C6977C	1524 x 30,5	60 x 100			●	●	●	●						60		60		60																														
	Q1956A	1067 x 68,5	42 x 225			●			●	44	44		●	●	●	●	●	●	●	●	●	●								44												●	●	●	●	●	●		
	Q1957A	1524 x 68,5	60 x 225			●			●						60		60		60																														
	HP Super Heavyweight Plus Matte Paper 🌱 ⁴	Q6626B	610 x 30,5	24 x 100			●	●	●	●	●	●		●	●	●	●	●	●	●	●	●	●								●												●	●	●	●	●	●	
Q6627B		914 x 30,5	36 x 100			●	●	●	●	44	44		●	●	●	●	●	●	●	●	●	●	●							44												●	●	●	●	●	●		
Q6628B		1067 x 30,5	42 x 100			●	●	●	●	44	44		●	●	●	●	●	●	●	●	●	●	●							44												●	●	●	●	●	●		
Q6630B		1524 x 30,5	60 x 100			●	●	●	●						36		60		60																														
D9R36A		914 x 61	36 x 200	●		●	●	●	●	44 ⁷	44 ⁷		● ⁷	● ⁷	● ⁷	● ⁷	● ⁷	● ⁷	● ⁷	● ⁷	● ⁷	● ⁷																				● ⁷	● ⁷	● ⁷	● ⁷	● ⁷			
D9R37A		1067 x 61	42 x 200	●		●	●	●	●	44 ⁷	44 ⁷		● ⁷	● ⁷	● ⁷	● ⁷	● ⁷	● ⁷	● ⁷	● ⁷	● ⁷	● ⁷																				● ⁷	● ⁷	● ⁷	● ⁷	● ⁷			
D9R38A		1270 x 61	54 x 200	●		●	●	●	●						40 ⁷		60 ⁷																																
D9R39A		1524 x 61	60 x 200	●		●	●	●	●						40 ⁷		60 ⁷																																
HP Technical Papers																																																	
HP Special Inkjet Paper (FSC® certified) ³ 🌱 ⁴	51631D	610 x 45,7	24 x 150			●			●	●		●	●	●	●	●	●	●	●	●	●	●								●												●	●	●	●	●	●		
	51631E	914 x 45,7	36 x 150			●	●	●	●			●	●	●	●	●	●	●	●	●	●	●								●												●	●	●	●	●	●		
HP Natural Tracing Paper (FSC® certified) ³ 🌱 ⁴	C3869A	610 x 45,7	24 x 150			●	●	●	●	●	●		●	●	●	●	●	●	●	●	●	●								●													●	●	●	●	●	●	
	C3868A	914 x 45,7	36 x 150			●	●	●	●	44	44		●	●	●	●	●	●	●	●	●	●	36							44												●	●	●	●	●	●		
	Q1439A	(A1) 594 x 45,7					●			●	●		●	●	●	●	●	●	●	●	●	●								●													●	●	●	●	●	●	
HP Translucent Bond Paper 🌱 ⁴	C3860A	610 x 45,7	24 x 150			●	●	●	●	●	●		●	●	●	●	●	●	●	●	●	●								●													●	●	●	●	●	●	
	C3859A	914 x 45,7	36 x 150			●	●	●		44	44		●	●	●	●	●	●	●	●	●	●	36							44												●	●	●	●	●	●		
HP Films (Graphics and Technical)																																																	
HP Clear Film 🌱 ¹	C3876A	610 x 22,9	24 x 75			●	●	●	●	●	●		●	●	●	●	●	●	●	●	●	●								●												●	●	●	●	●	●		
	C3875A	914 x 22,9	36 x 75			●	●	●	●	44	44		●	●	●	●	●	●	●	●	●	●	36							44												●	●	●	●	●	●		
HP Matte Film 🌱 ¹	51642A	610 x 38,1	24 x 125			●	●	●	●	●	●		●	●	●	●	●	●	●	●	●	●								●													●	●	●	●	●	●	
	51642B	914 x 38,1	36 x 125			●	●	●	●	44	44		●	●	●	●	●	●	●	●	●	●	36							44												●	●	●	●	●	●		

Printer availability varies by region. Americas includes the United States, Canada, and Latin America.

Region availability

Compatibility & Availability Chart

Printer availability varies by region. Americas includes the United States, Canada, and Latin America.

HP Graphics and Technical Printing Materials

Region
availability

HP DesignJet Printer/Photo Printer/Multifunction Printer Compatibility and Ink Technology

Printing Materials				Region				HP DesignJet Printers / Note Printers / Multifunction Printers / Computers and Ink Technology																																									
				availability				HP pigment inks					HP dye color inks																																				
	Part number	Metric size (mm x m)	Imperial size (in x ft)	3-in Core	2-Pack	Americas	Japan	Asia (not Japan)	Europe	DesignJet Z2100	DesignJet Z3100	DesignJet Z3200	DesignJet Z5200	DesignJet Z6100	DesignJet Z6200	DesignJet Z6600	DesignJet Z6800	DesignJet 5000 Dye	DesignJet 5500 Dye	DesignJet D3800	DesignJet T120	DesignJet T520	DesignJet T730	DesignJet T830 MFP	DesignJet T610	DesignJet T770	DesignJet T790	DesignJet T1100	DesignJet T1120	DesignJet T1200	DesignJet T1300	DesignJet T2300 MFP	DesignJet T920	DesignJet T930	DesignJet T1500	DesignJet T1530	DesignJet T2500 MFP	DesignJet T2530 MFP	DesignJet T3500 MFP	DesignJet T620	DesignJet T7100	DesignJet T7200	DesignJet T11	DesignJet 130					
HP Photographic Papers (continued)																																																	
HP Universal Instant-dry Satin Photo Paper (FSC® certified) ³ 🌱 ⁵	Q6579A	610 x 30,5	24 x 100			●	●	●	●	●	●	●	●	●	●	●	●	●	●	●	●	●	●	●	●	●	●	●	●	●	●	●	●	●	●	●	●	●	●	●	●	●	●						
	Q6580A	914 x 30,5	36 x 100			●	●	●	●	45	45	●	●	●	●	●	●	●	●	●	●	●	35	●	●	45	●	●	●	●	●	●	●	●	●	●	●	●	●	●	●	●	●	●					
	Q6581A	1067 x 30,5	42 x 100			●	●	●	45	45	●	●	●	●	●	●	●	●	●	●	●	●	●	●	45	●	●	●	●	●	●	●	●	●	●	●	●	●	●	●	●	●	●	●					
	Q6582A	1270 x 30,5	50 x 100			●	●	●					60	60	60	60	60	60	60	60	60	60	60	60	60	60	60	60	60	60	60	60	60	60	60	60	60	60	60	60	60	60	60						
	Q6583A	1524 x 30,5	60 x 100			●	●	●	●					60	60	60	60	60	60	60	60	60	60	60	60	60	60	60	60	60	60	60	60	60	60	60	60	60	60	60	60	60	60						
	Q8755A	1067 x 61	42 x 200			●	●	●	45	45	●	●	●	●	●	●	●	●	●	●	●	●	●	●	●	●	●	●	●	●	●	●	●	●	●	●	●	●	●	●	●	●	●	●	●	●			
Q8757A	1524 x 61	60 x 200			●	●	●						60	60	60	60	60	60	60	60	60	60	60	60	60	60	60	60	60	60	60	60	60	60	60	60	60	60	60	60	60	60	60	60	60				
HP Premium Satin Photo Paper (FSC® certified) ³ 🌱 ⁴	CZ987A	610 x 15,2	24 x 50			●												●	●	●	●	●	●	●	●	●	●	●	●	●	●	●	●	●	●	●	●	●	●	●	●	●	●	●	●	●			
	Q8808A	914 x 22,9	36 x 75			●		●										●	●	●	●	●	35	●	45	●	●	●	●	●	●	●	●	●	●	●	●	●	●	●	●	●	●	●	●	●			
HP Premium Instant-dry Gloss Photo Paper (FSC® certified) ³ 🌱 ⁵	Q7991A	610 x 22,9	24 x 75			●	●	●	●	●	●	●	●	●	●	●	●	●	●	●	●	●	●	●	●	●	●	●	●	●	●	●	●	●	●	●	●	●	●	●	●	●	●	●	●	●			
	Q7993A	914 x 30,5	36 x 100				●	45	45	45	●	●	●	●	●	●	●	●	●	●	●	●	●	●	●	●	●	●	●	●	●	●	●	●	●	●	●	●	●	●	●	●	●	●	●	●			
	Q7995A	1067 x 30,5	42 x 100			●	●	45	45	45	●	●	●	●	●	●	●	●	●	●	●	●	●	●	●	●	●	●	●	●	●	●	●	●	●	●	●	●	●	●	●	●	●	●	●	●			
	Q7997A	1270 x 30,5	50 x 100			●								60	60	60	60	60	60	60	60	60	60	60	60	60	60	60	60	60	60	60	60	60	60	60	60	60	60	60	60	60	60	60					
	Q7999A	1524 x 30,5	60 x 100			●	●	●						60	60	60	60	60	60	60	60	60	60	60	60	60	60	60	60	60	60	60	60	60	60	60	60	60	60	60	60	60	60	60	60	60			
HP Premium Instant-dry Satin Photo Paper (FSC® certified) ³ 🌱 ⁵	Q7992A	610 x 22,9	24 x 75			●	●	●	●	●	●	●	●	●	●	●	●	●	●	●	●	●	●	●	●	●	●	●	●	●	●	●	●	●	●	●	●	●	●	●	●	●	●	●	●	●	●	●	
	Q7994A	914 x 30,5	36 x 100				●	45	45	45	●	●	●	●	●	●	●	●	●	●	●	●	●	●	●	●	●	●	●	●	●	●	●	●	●	●	●	●	●	●	●	●	●	●	●	●			
	Q7996A	1067 x 30,5	42 x 100			●	●	45	45	45	●	●	●	●	●	●	●	●	●	●	●	●	●	●	●	●	●	●	●	●	●	●	●	●	●	●	●	●	●	●	●	●	●	●	●	●			
	Q7998A	1270 x 30,5	50 x 100			●	●							60	60	60	60	60	60	60	60	60	60	60	60	60	60	60	60	60	60	60	60	60	60	60	60	60	60	60	60	60	60	60					
	Q8000A	1524 x 30,5	60 x 100			●	●	●						60	60	60	60	60	60	60	60	60	60	60	60	60	60	60	60	60	60	60	60	60	60	60	60	60	60	60	60	60	60	60	60	60			
HP Professional Instant-dry Satin Photo Paper 🌱 ⁵	Q8759A	610 x 15,2	24 x 50	●		●	●	●	7	7	7	7	7	7	7	7	7	7	7	7	7	7	7	7	7	7	7	7	7	7	7	7	7	7	7	7	7	7	7	7	7	7	7	7	7	7			
	Q8840A	1118 x 15,2	44 x 50	●		●	●	●	45	45	45	45	45	60	60	60	60	60	60	60	60	60	60	60	60	60	60	60	60	60	60	60	60	60	60	60	60	60	60	60	60	60	60	60	60	60			
HP Backlit Materials																																																	
HP Premium Vivid Color Backlit Film 🌱 ⁵	Q8747A	914 x 30,5	36 x 100			●	●	●	45	45	45	●	●	●	●	●	●	●	●	●	●	●	●	●	●	●	●	●	●	●	●	●	●	●	●	●	●	●	●	●	●	●	●	●	●	●	●	●	
	Q8748A	1067 x 30,5	42 x 100			●	●	●	45	45	45	●	●	●	●	●	●	●	●	●	●	●	●	●	●	●	●	●	●	●	●	●	●	●	●	●	●	●	●	●	●	●	●	●	●	●	●	●	
	CG924A	1270 x 30,5					●							60	60	60	60	60	60	60	60	60	60	60	60	60	60	60	60	60	60	60	60	60	60	60	60	60	60	60	60	60	60	60	60	60			
	Q8749A	1372 x 30,5	54 x 100			●	●	●						60	60	60	60	60	60	60	60	60	60	60	60	60	60	60	60	60	60	60	60	60	60	60	60	60	60	60	60	60	60	60	60	60	60	60	
	Q8750A	1524 x 30,5	60 x 100			●	●	●						60	60	60	60	60	60	60	60	60	60	60	60	60	60	60	60	60	60	60	60	60	60	60	60	60	60	60	60	60	60	60	60	60	60	60	
HP Self-adhesive Materials																																																	
HP Everyday Adhesive Gloss Polypropylene	COF28A	914 x 22,9	36 x 75	●	●	●	●	45	45	45	45	●	●	●	●	●	●	●	●	●	●	●	●	35	●	45	●	●	●	●	●	●	●	●	●	●	●	●	●	●	●	●	●	●	●	●	●	●	
	COF29A	1067 x 22,9	42 x 75	●	●	●	●	45	45	45	45	●	●	●	●	●	●	●	●	●	●	●	●	●	45	●	●	●	●	●	●	●	●	●	●	●	●	●	●	●	●	●	●	●	●	●	●	●	
HP Everyday Adhesive Matte Polypropylene	COF18A	610 x 22,9	24 x 75	●	●	●	●	45	45	45	45	●	●	●	●	●	●	●	●	●	●	●	●	●	●	●	●	●	●	●	●	●	●	●	●	●	●	●	●	●	●	●	●	●	●	●	●	●	
	COF19A	914 x 22,9	36 x 75	●	●	●	●	45	45	45	45	●	●	●	●	●	●	●	●	●	●	●	35	●	45	●	●	●	●	●	●	●	●	●	●	●	●	●	●	●	●	●	●	●	●	●	●	●	
	COF20A	1067 x 22,9	42 x 75	●	●	●	●	45	45	45	45	●	●	●	●	●	●	●	●	●	●	●	●	●	45	●	●	●	●	●	●	●	●	●	●	●	●	●	●	●	●	●	●	●	●	●	●	●	
	COF22A	1524 x 22,9	60 x 75	●	●	●	●							60	60	60	60	60	60	60	60	60	60	60	60	60	60	60	60	60	60	60	60	60	60	60	60	60	60	60	60	60	60	60	60	60	60	60	
	D9R24A	914 x 30,5	36 x 100	●	●	●	●	45	45	45	45	7	7	7	7	7	7	7	7	7	7	7	7	7	7	7	7	7	7	7	7	7	7	7	7	7	7	7	7	7	7	7	7	7	7	7	7		
	D9R25A	1067 x 30,5	42 x 100	●	●	●	●	45	45	45	45	7	7	7	7	7	7	7	7	7	7	7	7	7	7	7	7	7	7	7	7	7	7	7	7	7	7	7	7	7	7	7	7	7	7	7	7	7	
	D9R26A	1270 x 30,5	50 x 100	●	●	●	●							60	60	60	60	60	60	60	60	60	60	60	60	60	60	60	60	60	60	60	60	60	60	60	60	60	60	60	60	60	60	60	60	60	60	60	
	D9R27A	1524 x 30,5	60 x 100	●	●	●	●							60	60	60	60	60	60	60	60	60	60	60	60	60	60	60	60	60	60	60	60	60	60	60	60	60	60	60	60	60	60	60	60	60	60	60	
HP Universal Adhesive Vinyl (REACH compliant) ⁶	W4Y93A	610 x 20	24 x 66			●		●	●	●	●	●	●	●	●	●	●	●	●	●	●	●	●	●	●	●	●	●	●	●	●	●	●	●	●	●	●	●	●	●	●	●	●	●	●	●	●	●	●
	C2T51B	914 x 20	36 x 66			●		45	45	45	45	●	●	●	●																																		

Compatibility & Availability Chart

Printer availability varies by region. Americas includes the United States, Canada, and Latin America.

For Z Series Printers	HP Graphics Printing Materials										Region availability		Z series application categories										HP DesignJet Printer/Photo Printer Compatibility and Ink Technology											
	Weight	Part number	Metric size (mm x m)	Imperial size (in x ft)	3-in Core	2 Pack	Americas	Japan	Asia (not Japan)	Europe	Trade show and event displays	Backlit displays	Posters and presentations	POP and retail displays	Photo enlargements	Proofing	Art reproductions	Banners	Geographic Information Systems	Architecture and engineering	HP pigment inks								HP dye color inks					
																					DesignJet Z2100	DesignJet Z3100	DesignJet Z3200	DesignJet Z5200	DesignJet Z5400	DesignJet Z6100	DesignJet Z6200	DesignJet Z6600	DesignJet Z6800	DesignJet 5000 UV	DesignJet 5500 UV	DesignJet 5000 Dye	DesignJet 5500 Dye	
HP Banner and Sign Materials (continued)																																		
HP Premium Matte Polypropylene ^(G5)	C2T53A	914 x 22,9	36 x 75																															
	C2T54A	1067 x 22,9	42 x 75																															
	C5G02A	1524 x 22,9	60 x 75																															
HP Durable Semi-gloss Display Film	Q6620B	914 x 15,2	36 x 50																															
HP Durable Banner with DuPont™ Tyvek® ^(G5)	COF12A	914 x 22,9	36 x 75																															
	COF14A	1524 x 22,9	60 x 75																															
HP Opaque Scrim (REACH compliant) ⁶	Q8675C	610 x 15,2	24 x 50																															
	Q1898C	914 x 15,2	36 x 50																															
	Q1899C	1067 x 15,2	42 x 50																															
	Q1901C	1372 x 15,2	54 x 50																															
	Q1902C	1524 x 15,2	60 x 50																															
HP Fine Art Printing Materials																																		
HP Artist Matte Canvas	E4J54B	610 x 15,2	24 x 50																															
	E4J55B	914 x 15,2	36 x 50																															
	E4J56B	1067 x 15,2	42 x 50																															
	E4J57A	1118 x 15,2	44 x 50																															
	E4J58B	1524 x 15,2	60 x 50																															
HP Professional Matte Canvas	E4J59C	610 x 15,2	24 x 50																															
	E4J60B	914 x 15,2	36 x 50																															
	E4J61B	1067 x 15,2	42 x 50																															
	J3E86A	1118 x 15,2	44 x 50																															
	J3E87B	1524 x 15,2	60 x 50																															
HP Matte Litho-realistic Paper (FSC® certified) ³	K6B77A	610 x 30,5	24 x 100																															
	K6B78A	914 x 30,5	36 x 100																															
	K6B80A	1118 x 30,5	44 x 100																															
	K6B82A	1524 x 30,5	60 x 100																															

¹ HP Large Format Media take-back program availability varies. Recycling programs may not exist in your area. See [HPLFMedia.com/ecosolutions](https://hplfmedia.com/ecosolutions) for details.

² Visit [HPLFMedia.com/ecosolutions](https://hplfmedia.com/ecosolutions) to see how to participate and for HP Planet Partners program availability; program may not be available in your area. Where this program is not available, consult the Material Safety Data Sheet (MSDS) available at [HPLFMedia.com/ecosolutions](https://hplfmedia.com/ecosolutions) to determine appropriate disposal.

³ Compatibility with rolls requires roll-feed accessory.

⁴ BMG trademark license code FSC®-C115319, see fsc.org. HP trademark license code FSC®-C017543, see fsc.org. Not all FSC®-certified products are available in all regions. For information about HP large format printing materials, please visit [HPLFMedia.com](https://hplfmedia.com).

⁵ Can be recycled through commonly available recycling programs.

⁶ Papers can be recycled according to region-specific practices. In North America and Asia (including Japan), recyclable in consumer collection systems that can accept mixed paper (may not be recyclable in your area); in Europe recyclable in consumer collection systems that accept liquid packaging.

⁷ Compatible with the HP DesignJet Z3200 Photo Printer series only.

³⁰ Compatible only with the 36-inch (914 mm) version of the printer series.

⁴⁴ Compatible only with the 44-inch (1118 mm) version of the printer series.

⁶⁰ Compatible only with the 60-inch (1524 mm) version of the printer series.



How to order

HP technical and graphics large format printing materials

Explore the wide range of different types of printing materials, specifically designed to meet the demands of graphics and technical professionals.

Please contact us at:

Americas

- U.S., Canada: 888-893-4668
- Mexico, Latin America: +01-800-681-6740
- Brazil: +55-11-4950-8547

Europe, Middle East, and Africa

- Spain & Portugal: +34-935-479-700
- United Kingdom & Ireland: +44 (0) 24 7718 0068
- France: +33 (0)1 84 88 00 35
- Russia & CIS Region: +7 499 918 4279
- Italy: +39-02-9475-4971
- Germany & Austria: +49 (0) 3030 806 625
- Benelux & Nordics: +32 28 080 750
- Central & Eastern Europe: + 42 022 888 2053

Asia Pacific

- Australia: +61 2 8038 5013
- Singapore: +65-3158-4677
- Japan: +81-3-6388-0362

We look forward to working with you and providing you with the best possible products, service, and support.

For more information, visit our website at: <http://HPLFMedia.com>

For detailed information on the HP large format printing materials portfolio and to order, visit HPLFMedia.com

